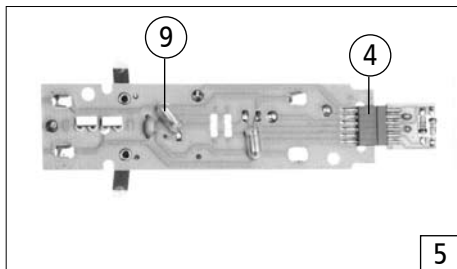
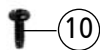
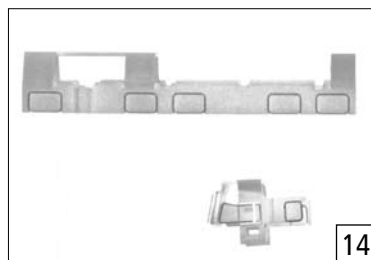
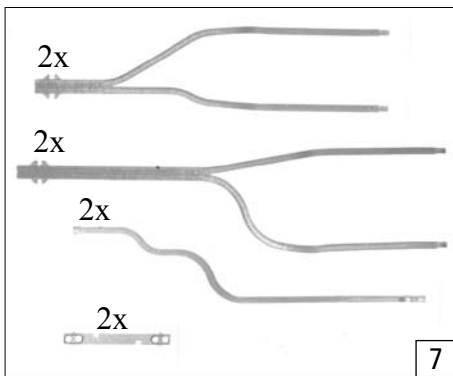
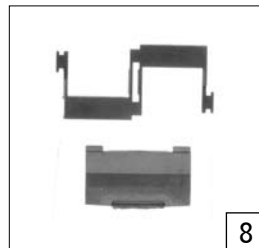
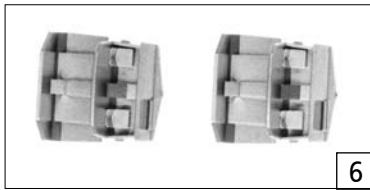
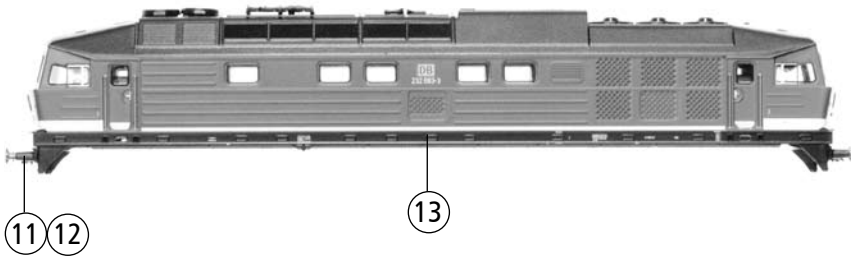
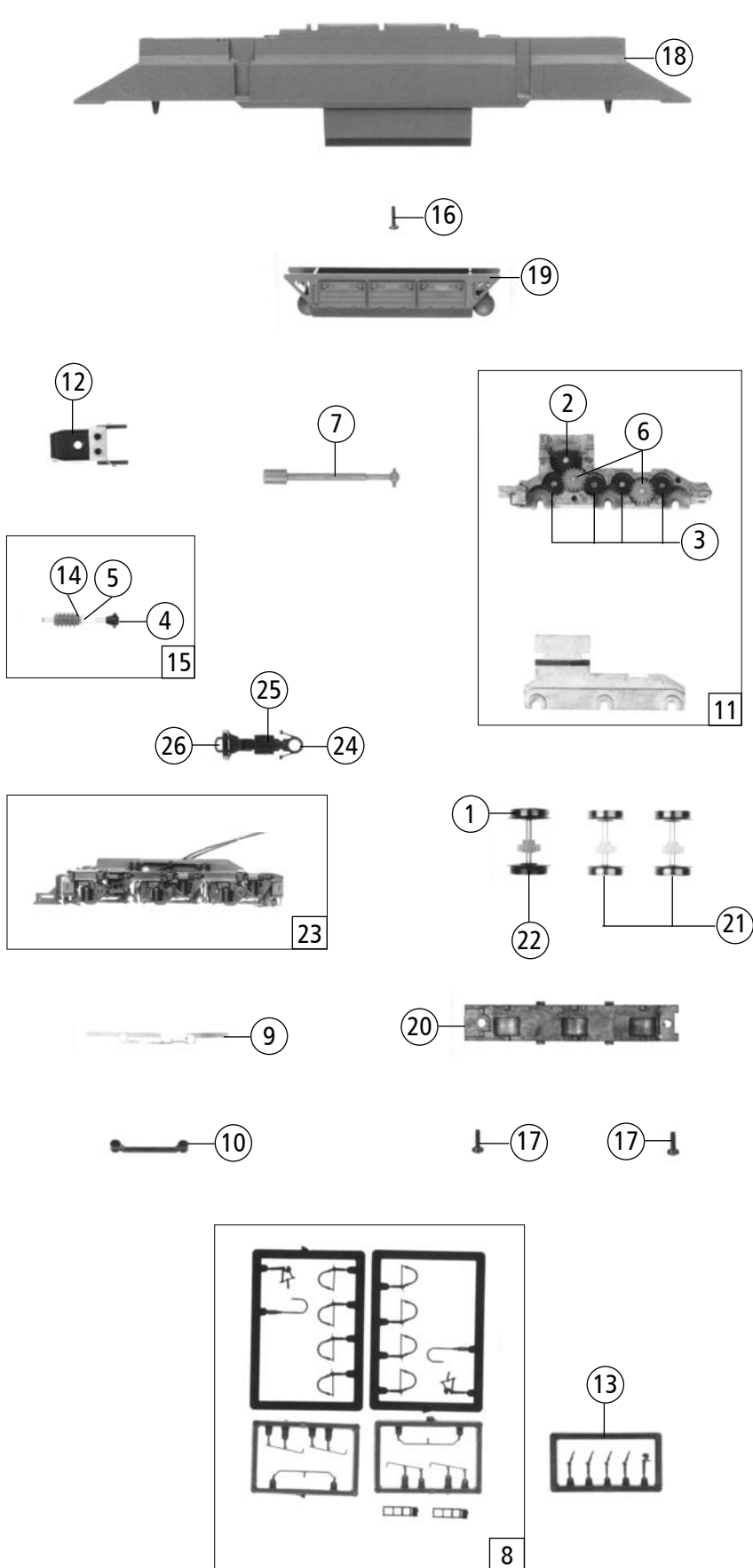


Symbolische Darstellung
Symbolic Illustration



Pos. Nr. Pos. no.	Beschreibung Description	Art.-Nr. Art. no.	Preisgruppe Price bracket
1	Motor Motor	85125	55
2	Kardanschale Cardan bearing	87104	3
3	Kardanschale 8,0 mm Cardan bearing 8,0mm	87152	2
4	Steckplatine Printed	87829	20
5	Platine komplett Printed circuit assembly	87859	38
6	Führerstand Drivers cab	107655	10
7	Lichtleitstäbesatz Light transmission bar set	107656	10
8	Lichtabdeckungssatz Light cover set	109328	6
9	Drahtlampe T3/4 16V 30mA Light bulb T3/4 16V 30mA	108616	10
10	GF-Schraube M2x5 GF-Screw M2x5	114966	2
11	Puffer gewölbt Buffer vaulted	107659	4
12	Puffer flach Buffer flat	107658	4
13	Gehäuse komplett Betr. Nr. W232.04 Body assembly no. W232.04	123290	60
14	Stirnfenster + Seitenfenster Front window + side window	123292	18
15	Trittbrett Running board	123293	3

Änderungen in Konstruktion und Ausführung vorbehalten
We reserve the right to change the construction and specification



36210		ITL W232	=	
Pos. Nr. Pos.no.	Beschreibung Description	Art.-Nr. Art.no.	Preisgruppe Price bracket	
1	Hafring N 8-10mm 0,3 Traction tyre set	85611	---	
2	Schneckenzahnrad Z=19/14 M=0.3 Gear Z=19/14 M=0.3	86400	3	
3	Zahnrad Z=14 gerade M=0.3 rot Gear Z=14 gerade M=0.3 red	86496	2	
4	Kardankugel Cardan shaft	87106	2	
5	Schneckenlager Worm axle bearing	89750	4	
6	Zwischenzahnrad Gear between	97738	3	
7	Kardanwelle Cardan shaft	107646	3	
8	Zurüstbeutel Bag with accessories	123291	15	
9	Radkontakt Wheel current contact strip	108045	3	
10	Kontakthalter Contact holder	108046	2	
11	Getriebebesatz ohne Zahnräder Gear part set without gears	108048	9	
12	Schneckendeckel Worm cover	123537	2	
13	Bremsschlauch+Kupplungshaken Air-brake hose and coupling hook	109329	6	
14	Scheibe Disc	112394	3	
15	Schneckensatz Worm set	113059	24	
16	Schraube M1.6x6 Screw M1.6x6	113069	2	
17	GF-Schraube M1.6x4 GF-Screw M1.6x4	114850	2	
18	Grundrahmen Frame	123539	23	
19	Tank Tank	109319	10	
20	Getriebeboden Gear bottom	109322	5	
21	Radsatz m. Zahnrad ohne Hafring Wheelset with gear without traction tyre	109323	16	
22	Radsatz mit Zahnrad mit 2 Hafringen Wheelset with gear with traction tyre	109324	18	
23	Blende komplett Bogie frame assembly	109325	23	
24	Kupplungskammer Coupling chamber	109331	2	
25	Kupplungsdeckel Coupling cover	109332	2	
26	TT-Standardkupplung Standard coupling	109333	5	

Ersatzteile erhalten Sie bei Ihrem Fachhändler, oder Ihrer Landesvertretung:
You can order your Replacement Parts at your local dealer, your country representative: